

Cov

Smart temperature thermal camera with facial recognition

Delivery model

- The whole machine + APP + cloud management system
- The whole machine + APP + (Software docking mode)
- SDK API on software development



Supports 4G&LAN&



Wall mounted

Floor standing

Access channel

Environment temperature sensor



Remote contactless temperature measurement



Warning of fever

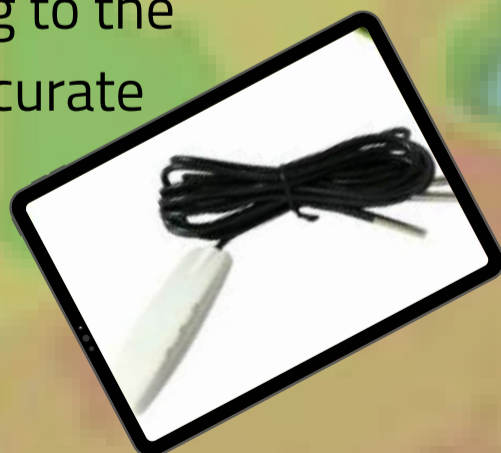


Real-time temperature display



Built-in dual camera

The ambient temperature sensor will automatically correct the measurement error of human body temperature according to the ambient temperature, achieving accurate temperature measurements.



30000 Face database



Remind to wear a mask



Recognition speed < 1 S



Backlight Face tracking



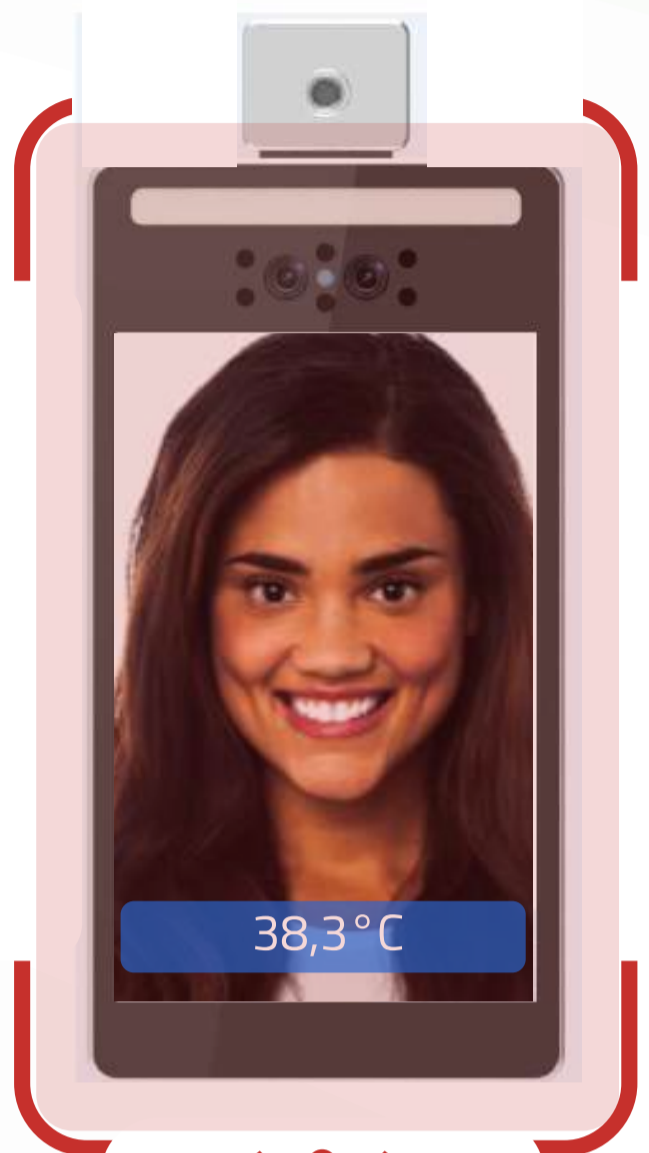
99,7% Recognition rate



Infrared & RGB Double light compensation

Alarm function for mask wearing and abnormal body temperature

Non-contact infrared detecting for one person at a time, preventing contacting the infected.



Fever temperature!
"Please wear a mask."

Smart identification

Add a recognition reader and a face access control system to support software development to meet different applications



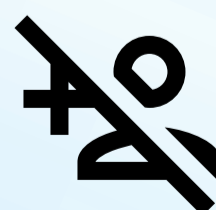
Identification recognition



Limit of authority management



Member card recognition



Stranger visiting system



Big data collecting



Staff identification entering

Data management

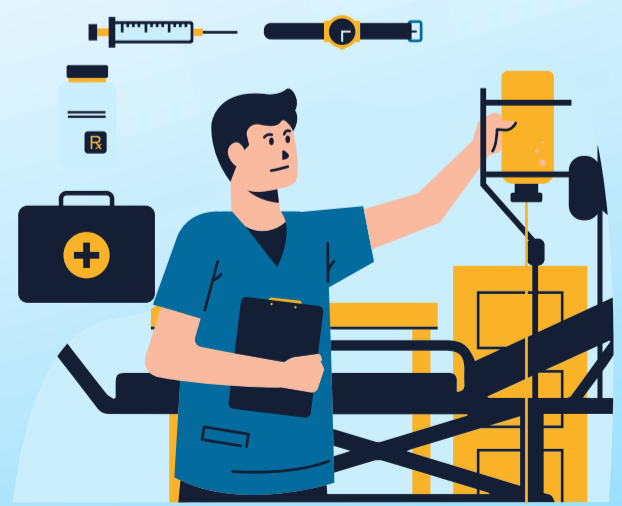
The attendance report can be exported in anytime. The data table including the following points:

- Access controller
- Visitor tracking
- Visitor temperature situation monitoring
- Staff attendance
- Meeting registration
- Sending message to different people
- recognition



Application

It can be used with electric gate and access controller. Applicable too; schools, banks, businesses, transportation, shopping malls etc.



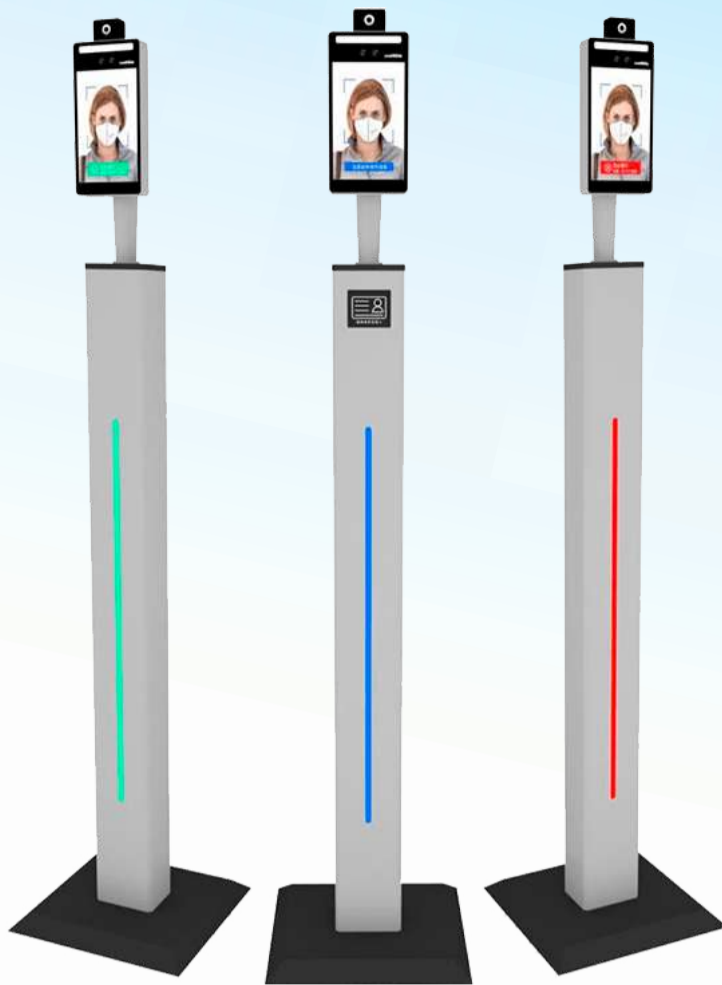
Supports 4G&LAN&

Wall mounted



Floor standing

Access channel



Access channel

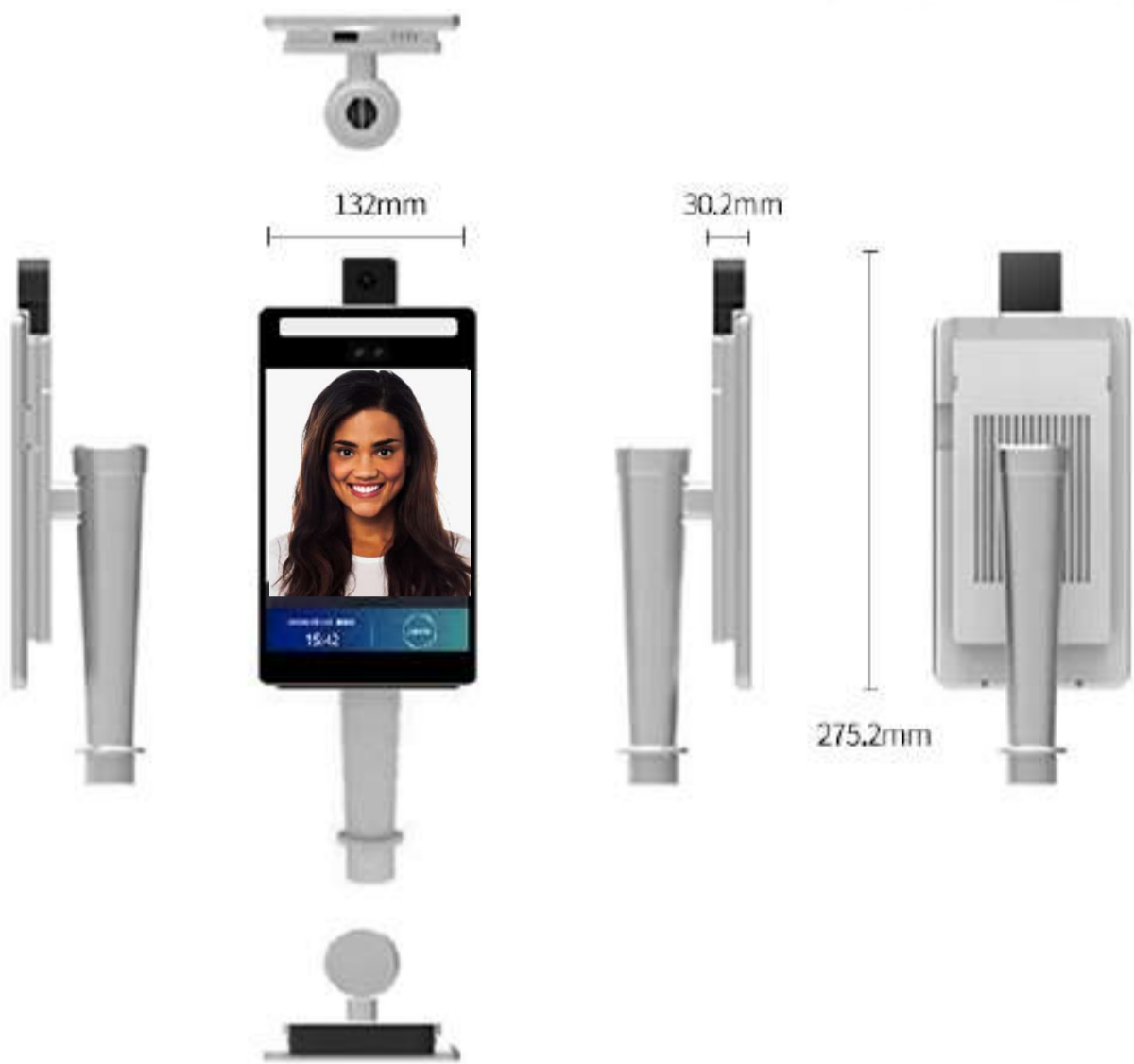


Wall mounted

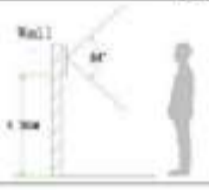
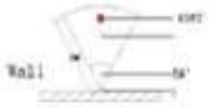


Floor standing

Product features



Face recognition integrated terminal

	Model number	VF2-H
Screen	Display Screen	8 inch, full viewing angle, 170 degree IPS LCD screen
	Resolution	800 x 1200
CPU configuration	Operating System	Android 7.1. above
Power/power consumption	Power Input	DC 12v, 3A
	Power Consumption	15W MAX
Temperature measurement module	Pixel	32*32 Real-time temperature output
	Measurement accuracy	0.5 °C
	Measuring distance	0.3M to 1M (suggest 0.5M)
	Operating temperature	-20 °C to 85 °C
	Storage temperature	-40 °C to 85 °C
Camera	Power consumption	≅ 0.3W
	Type (RGB)	Infrared
	Resolution	2 million pixels
	Aperture	F2.8
	Focal Length	3.18mm
	White balance	Automatic
	Wide dynamic	Support
	Vertical wide angle	
	Horizontal wide angle (on access control equipment)	
	Hardware Configuration	Identification method
Face recognition parameters		Brush face
		Face verification accuracy >99%
		Face recognition distance 0.5m-1.5m
		Face ID card comparison time 600MS
Local capacity 20,000 sheets		
Interface	USB	1
	Gigabit	1
	Relay output	1
	Wiegand Port	1
Network	WiFi	2.4G 802.11a/b/g/n
	Bluetooth	Bluetooth 4.0
	4G LTE	Full Netcom (optional: custom purchase required)
Working/Storage environment	Working environment	Indoor/Outdoor
	Relative humidity	0% to 90% (in a non-condensing state)
	Operating temp.	-20 to 60 °C
Unit dimension		275.2mm*132mm*30.2mm
Dustproof and Waterproof		IP55